



Hokianga Health Hauora Hokianga

Private Bag, Kaikohe

Ph: (09) 4057 709 Fax: (09) 4057 329

COMMUNITY NEWSLETTER No. 173

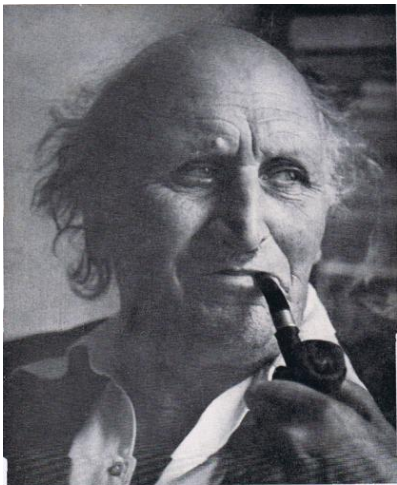
MARCH 2010

This newsletter is published monthly to keep you informed of what is happening at Hokianga Health. If you have any comments, contributions or questions, please contact Stephanie Pelin at the hospital on (09) 4057-351, or the Trustees for your clinic area.

100 YEARS CELEBRATION ISSUE Saturday 13 March and Sunday 14 March 2010

Hokianga Hospital was built on its current site in 1909 – health services in Hokianga have been around for more than a hundred years. The history of these services is truly remarkable, and something we are very proud of.

We always remember Dr George McCall Smith who arrived in Hokianga in 1914. This dedicated and outspoken doctor was an exceptional man in many ways – with a visionary style and the determination to put his plans into place.



Sparrow Pictures

Dr Smith's new hospital, built in 1928, was hailed as the best and most up-to-date in the country, and acknowledged as a model to be used throughout New Zealand. The creation in Hokianga of a "Special Area" in 1941 was the foundation of the integrated service we have today. The services have always been a partnership between the Maori and non-Maori of the area. The stories of those who worked with Dr Smith, upholding the vision and bringing it forward to the 21st century are inspirational.

Since the formation of Hokianga Health Enterprise Trust in 1992, Hauora Hokianga has moved ahead significantly. Extensive improvements to the hospital campus have been made, services extended, research conducted and strategies developed for addressing the particular needs and aspirations of the Hokianga community.

We invite the community and those with a connection to Hokianga to join us in celebrating this auspicious occasion as we look forward to the next one hundred years!

PROGRAMME SATURDAY 13 MARCH

8am Registrations at the Nurses home: late registrations accepted; those already registered can collect orders.

9.30 Powhiri & taki/wero
Karakia, speeches and mihi mihi
Unveiling of commemoration plaque
Cutting of cake
Morning tea

12pm Move to lower Rawene Primary school grounds: displays, DVDs, hangis, teas

1.30 to 3pm Top Team games Noon Boat Trips

6pm Light meal and drinks Dinner at Rawene Town Hall

8pm to Midnight Cabaret Dance at Rawene Town Hall
(Return ferry to North Hokianga at midnight)

SUNDAY 14 MARCH

10am Church service (At Te Whare Matauranga, Hokianga Hospital)

11.30am to Noon Boat Trips

12.30pm Finger food lunch at Masonic Hotel, Rawene

We have produced a photo history book with pictures and stories from the last hundred years. You can order a copy of this book for \$20 with registration or \$30 on the day.

Registration forms are available from the Hospital, from our website www.hokiangahealth.org.nz or by calling (09) 405 7320.



Hauora Hokianga

Pouaka Poutapeta, Kaikohe

Waea: (09) 4057 709 Waea Whakaahua: (09) 4057 329

PANUI-A-IWI KOTAHI RAU WHITU TEKAU MA RUA

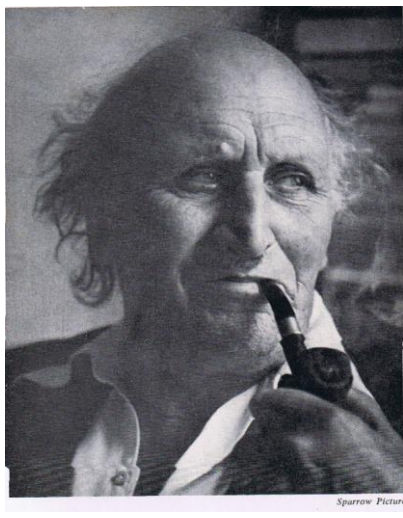
MAEHE 2010

E tūhia ana tēnei pānui kia noho mohio ai te iwi whānui ki ngā whakahaerenga o Hauora Hokianga. Mehemea he whakaaro ōu, he pātai rānei, he awhina rānei, me whakapā mai ki a Kirihi Wiremu i te Hohipere o Rawene; nama waea (09) 4057 320; me whakapā atu ranei ki te tarahiti o tōu rohe kainqā noho.

WHAKANUIA TE RAUTAU O TE HOHIPERE Rahoroi 13th ki te Ratapu 14th Maehe 2010

1909 te tau i tu ai te whare hohipere o Hokianga ki tetahi papa whenua i Rawene. Koni atu ano hoki i te rautau nga kaupapa hauora e rere ana, tau ana, e uu ana ki roto i ngaa papa kainga o Hokianga puta noa. Whakamiharo pai ki te ahua o te hekenga mai o te hohipere i roto tenei rautau tuatahi, ka whakawhetai, ka whakamihia te ngakau.

Tenei tatou e mahara tonu ake nei ki te rata matua a Dr George McCall Smith i tae tuatahi mai ki Hokianga i 1914. He rata whakapau manawa, he rata waha korero, he kanohi matekite hoki, aa he tangata whakatinana i aana korero ki te mahi, aa tutuki noa.



1928 i whakatungia te hohipere tuarua, ko te rata Mete te kaihautu. I puta te rongo o te pai o te hohipere hei taurira, hei kaiarahi kaupapa tuku hauora hei aru ma te motu. Ka tau ki 1941 i ara ake ai te kaupapa "Kainga Motuhake" koia puu te papa i tupu ake ai ngaa kaupapa tuku hauora i Hokianga, aa taea noatia tenei raa. He taurahere hoki te kaupapa hauora i te iwi tangata whenua me nga tangata tauwiwi, kia kootahi ai. E uu ana ano tena taura tangata. He mea whakamiharo nga korero o mua mo te rata a Mete me te hunga i mahi tahi ki a ia i aua waa.

I te whanaungatanga mai o te poari, Hokianga Health Enterprise Trust i 1992, ka ahu whakamua te kaha o Hauora Hokianga. I tutuki nga mahi whakatikatika whare, kua whanui te tuku kaupapa hauora, i puta nga mahi rangahau me te whakatakoto kaupapa arataki i wetahi wawata mo ngaa papa kainga i Hokianga. He tini noa atu ngaa mahi, kaupapa me nga korero nui e kore e oo te katoa ki te panui, ahakoa pukapuka.

E powhiri kaha ake ana to tatou hohipere ki a Hokianga me ona tangata, whanau, roopu, marae, hapu, iwi kia tatu mai ki te raa nui nei kia tuu kotahi ano ai ki te whakanui i te rautau tuatahi me te haerenga mai o nga tau o te rautau tuarua.

PAEROA RAHOROI 13TH MAEHE

- 8am:** Wa rehita ki te wharenoho o nga naahi
- 9.30:** Powhiri / taki
Karakia me nga whaikorero
Hura tohu whakamaharatanga
Kotinga o te keke me te kapu tii
- 12pm:** Ka heke ki te papa takaaro o te kura o Rawene
mo ngaa momo whakaaturanga, kai, takaaro
- 1.30 to 3pm:** Tima takaaro me te haerenga moana
- 6pm:** Kai ahiahi ki te hoooro o Rawene
- 8pm ki te po:** Po whakangahau ki te hoooro
12pm Poti whakamutunga ki Kohukohu

RATAPU 14 MAEHE

- 10am** Karakia nui ki Pou Kara Ariki te marae o te hohipere
- 11.30** Haerenga moana
- 12.30** Kapu tii ki te Masonic i Rawene

He pukapuka whakaahua hitori, korero hitori o te rautau kua pahure mo te hoko, \$20 me te rehita, \$30 a te raa o te hui.

Kei te hohipere nga pepa rehita, kei runga hoki i te papa ipurangi, www.hokiangahealth.org.nz, waea mai raanei ki te nama (09) 405 7320 kia rehitatia koe.

**NAU MAI HAERE MAI KI TENEI HUI NUI
WHAKAHARAHARA**